

# Linn County Animal Rescue & Sanctuary

Non-Profit | 501c3 | 39389 Plagman Dr. Lebanon, OR 97355

## Northwest Horse Fair & Expo 2023

LCAR will have a booth at the upcoming Northwest Horse Fair & Expo. We'll be offering information on our rescue, spreading the word about our volunteer opportunities, and holding a raffle with horse related items. Make sure to swing by and see us on one or more of the following dates!

- Friday, March 25th - 10am to 9pm
- Saturday, March 26th - 9am to 9pm
- Sunday, March 27th - 9am to 6pm

## Lebanon Chamber Biz Expo

This local business oriented event will be held on April 18th, 2023 and runs noon to 5:30pm at the River Center in Lebanon. There will be several informational booths and vendors to enjoy. Plus, LCAR will be attending so make sure to stop by and see us.

## Pet Day at OSU

The 36th Annual Carlson College of Veterinary Medicine's Pet Day at OSU will be held on May 6th, 2023 at Magruder Hall on OSU's Corvallis campus. Pet Day is a family-oriented, pet-friendly event where the public can meet and interact with a variety of animal interest groups including LCAR!

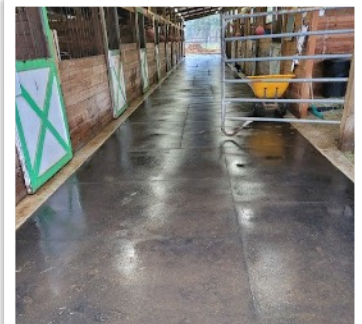
We're excited to announce that Linn County Animal Rescue celebrated its 15th birthday on January 29, 2023! LCAR



couldn't have made it this far without the support of our donors and volunteers and we're eternally grateful for their contributions. Here's to many more years of fulfilling our mission and helping animals in need.

## Barn Alleyway Project

LCAR was fortunate to receive a grant from the Siletz Tribal Charitable Contribution Fund in 2022 that has allowed us to complete a new barn renovation project. The project involved laying mats in the alleyway of the barn that provide an accessible avenue for the people who attend our Healing Hearts with Horses events. Individuals with walkers, canes, and wheelchairs now have the ability to walk safely from stall to stall and better enjoy the company of our horses. We appreciate STCCF and their generous support, without which this alleyway revamp would not have been possible.



## Another Way to Donate

If you're interested in another way to donate to LCAR, please consider drawing up a pet trust when planning your estate. For more info visit -

<https://www.asPCA.org/pet-care/pet-planning/pet-trust-primer>



Points for Profit has been a sustaining force for LCAR and many other local non-profits. Check with your favorite non-profit and ask how you can turn in your store receipts to help contribute. For additional info visit <https://pointsforprofit.org/>



**Wish List:** Grain, Hay, Bedding Equipment, Fencing Materials, Lumber, Tin, Supplies, and Financial Donations

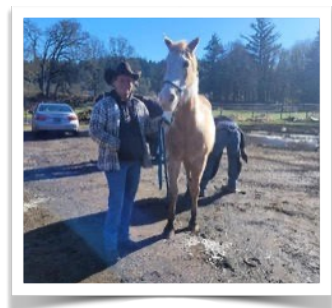
Donations can be made through our website, Network for Good, or mailed to LCAR, PO Box 2669, Lebanon OR 97355. We also accept items in-kind (lumber, grain, hay, fencing, grass seed, tin, farm equipment, and items we can sell at flea markets or garage sales).

## Community Involvement

Kids, Inc has joined our volunteer group to get some hands-on experience working with the animals at our rescue. We are grateful for their help and enjoying watching them grow as they care for and bond with the animals.



We're also pleased to be working with Oregon Farrier School for the benefit of their education and our rescued horses hooves! It is an exciting partnership and we are very grateful for the opportunity.



Don't forget that BottleDrop is an awesome opportunity to help our rescue animals and you can donate directly to Linn County Animal Rescue through your BottleDrop account (<https://www.bottledropcenters.com>). Speaking for those who can't, the animals appreciate any donation! Call Laurie Smouse at (541) 740-4401 to receive bags and tags, for pickup, or for additional information.

**Volunteers** are the heart beat of LCAR. We are privileged to have some very dedicated individuals who donate their time, labor, and love to care for our wounded animals. It is wonderful to see how the animals respond to their compassion and the positive impact these relationships have on both animal and human.

For more information on volunteering go to <https://lcarhorse.org>, call 541-258-3422, or write PO Box 2669 Lebanon, Oregon 97355.

